

THE NORFOLK ANGLERS CLUB

# WIRELINE

MAY 2023

## What's Inside

Guest Speaker: Ethan Simpson, Virginia Marine Resources Commission

Fishing Tips: Wreck Fishing with Captain Brandon Cook, *Reel Fish'n Charters, LLC*

### Fishing Reports;

- Inshore Wrecks: Tautog, Black Sea Bass
- CBBT: Black Sea Bass, Flounder, Tautog
- Lafayette River: Puppy Drum
- Elizabeth River: Puppy Drum
- Lynnhaven River: Puppy Drum
- Chuckatuck River/Brewers Creek: Puppy Drum
- Back River Reef: Tautog
- Little Creek/Pretty Lake: Puppy Drum, Speckled Trout
- Freshwater/Nottoway River: Shad, White Perch
- Freshwater/Chickahominy Lake: Bowfin, Largemouth Bass, White Perch



# Leadership Notes...

Fellow Norfolk Anglers,

Welcome to our new Norfolk Anglers Club members; David Derby and Brian Daniel.

A very slow start to the fishing season last month. Reports on Speckled Trout and Puppy Drum are hot & cold varying day by day. This month opens Blueline Tilefish on May 1st and Black Sea Bass on May 15th. Read more bout these seasons in the Anglers Interest section.

We have the Annual Hunt for the Hardheads Club Tournament in June and will be signing up anglers to participate. This a club challenge tournament among the southside Hampton Roads angler clubs. It's a great time for fishing and fellowship!

We'll be taking reservations for the Annual Awards Banquet at the May meeting. This is a wonderful evening at the Norfolk Yacht & Country Club on Saturday June 3rd. This is a private event for Norfolk Angler Club members and their invited guests.



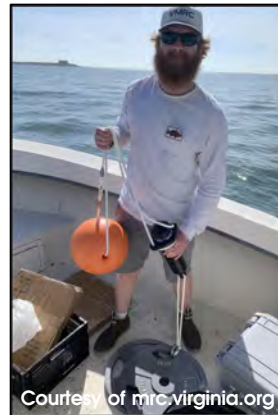
*Will*

On The Cover: A wonderful photo from Norfolk Angler Mike Rheinhart fishing with friends on Chickahominy Lake.

## Meeting

Guest Speaker: Ethan Simpson, Virginia Marine Resources Commission

The Marine Resources Commission has a number of great programs benefiting our angling community. The Marine Collections program & Ageing Laboratory are one of those ongoing programs and a more recent Acoustic Telemetry Program is another. Join us on Monday, May 15th at 7:00pm to learn more about both of these programs and how they benefit our fisheries.



**Important:**  
**May 15, 2023**  
**NAC Meeting at Boil Bay**  
**Seafood City, Norfolk, VA**

## Publishers NOTES

Editor:

Wendy Bransom

NorfolkAnglersClubEditor@gmail.com

## NAC OFFICERS

President:

Will Bransom

Vice President:

Henry Troutner

Treasurer:

Ned Smith

Awards Program:

Ike Eisenhower

Events Coordinator:

Mike Hubert

Assistant Events Coordinator:

Alex "AJ" Perez, Jr

Membership:

Ben Capps

Member at Large:

Alex Perez, Sr.

Webmaster:

Pat Hirsch

[pfhirsch@yahoo.com](mailto:pfhirsch@yahoo.com)

*Contact us at:*

[NorfolkAnglersClub@gmail.com](mailto:NorfolkAnglersClub@gmail.com)

Norfolk Anglers Club

P.O. Box 8422

Norfolk, Virginia 23503-0422



## Club Calendar

### MAY

Mon, May 15th: Norfolk Anglers Club Regular Meeting,  
Boil Bay Seafood City, Norfolk, VA  
Tues, May 23rd: Virginia Marine Resources  
Commission Meeting, Fort Monroe

### JUNE

Sat, Jun 3rd: Norfolk Anglers Club Annual Awards  
Banquet, NYCC (Private Event)  
Mon, Jun 19th: Norfolk Anglers Club Regular Meeting,  
Boil Bay Seafood City, Norfolk, VA  
Thurs, Jun 22nd: National Fish & Wildlife Service  
Summer Kid's Surf Fishing Event, Back Bay  
National Wildlife Refuge  
Sat, Jun 24th: Hunt for the Hardheads Club  
Tournament, Willoughby Harbor Marina

## Norfolk Anglers Club Prize Fish Entries 1 January - 30 April 2023

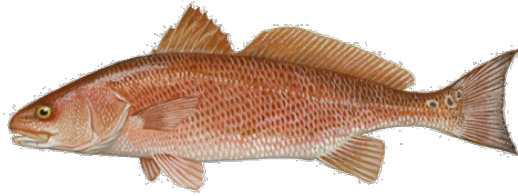
<u>Freshwater</u>		<u>Saltwater</u>	
<u>Species</u>	<u>Name (#Entries)</u>	<u>Species</u>	<u>Name (#Entries)</u>
Crappie	James Eisenhower (12) Russell Willoughby (10)	Speckled Trout	James Eisenhower (2) Ned Smith (2) Bert Sainz (1)
Chain Pickerel	Russell Willoughby (2)		
Largemouth Bass	Russell Willoughby (1)		
White Perch	Marty Schriebl (1)		
Blue Catfish	Mary Troutner (1)		

***For the 2023 Tournaments, ALL entries need to be submitted to [NorfolkAnglersClub@gmail.com](mailto:NorfolkAnglersClub@gmail.com)***

***Documentation from Virginia or North Carolina Fisheries or Wildlife agencies, as well as, the Norfolk Anglers Club Prize Fish paperwork is acceptable.***

\*\*\*\*Virginia Saltwater Tournament (Saltwater) or Department of Wildlife Resources (Freshwater) Citation paperwork or the Norfolk Anglers Club Prize Fish entry form must be submitted to James "Ike" Eisenhower via email to [NorfolkAnglersClub@gmail.com](mailto:NorfolkAnglersClub@gmail.com)

# Club Members Tournament for 2023



## Redfish "Spots" Tournament

### Rules

- Must be a Norfolk Anglers Club Member
- Tournament for fish caught between January 1, 2023 and December 31, 2023
- Must have the Norfolk Anglers Club decal in the photo with the fish on a measuring device\* showing the total length of the fish. See NAC Prize Fish Contest Rules for measuring info. \*Entries received with decal and no measurement can only be judged by number of spots. Photo entries without a decal or measurement tape are not accepted.
- Red Drum/Redfish up to 26 inches in length only and caught in Virginia and North Carolina waters
- Awards determined by 1st: number of Spots (on one side), 2nd: Largest Fish up to 26 inches, 3rd: Date of Catch
- Entries submitted on the Club Prize Fish Entry Form with photo (can be sent electronically to; [NorfolkAnglersClub@gmail.com](mailto:NorfolkAnglersClub@gmail.com))
- No entry fee except the cost of the decal (\$1)
- \$50.00 Gift Card to the 1st Place Angler, \$25.00 Gift Card for the 2nd Place Angler.



## Oyster Toadfish Tournament

### Rules

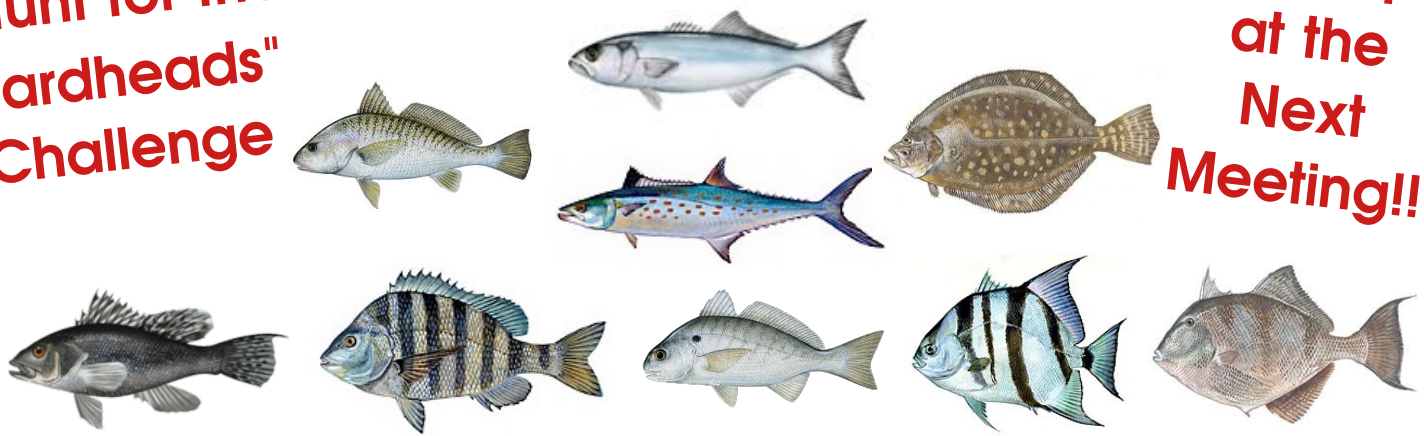
- Must be a Norfolk Anglers Club Member
- Tournament for fish caught between January 1, 2023 and December 31, 2023
- Awards determined by;
  - 1.Total Weight
  2. Date of catch
  3. Date of entry submission
- Additional Award for Best Oyster Toad Photo
- Entries submitted by email to [NorfolkAnglersClub@gmail.com](mailto:NorfolkAnglersClub@gmail.com) in the form of a Fishing Report; who was fishing, stating total weight, with photo of the fish on the scale
- Weighing need not be on a certified scale and may be done by the angler, just try an avoid weighing fish on a pitching boat
- No entry fee (we would never charge a fee for catching Toads)
- Winners will be determined by our Tournament Director

"AJ" Perez, the Oyster Toadfish Tournament Director (OTTD)



**"Hunt for the  
Hardheads"  
Challenge**

**Sign Up  
at the  
Next  
Meeting!!**



**"Hunt for the Hardheads"  
Saturday June 24, 2023**

Norfolk Anglers Club, Virginia Beach Anglers Club,  
Tidewater Anglers Club, and Great Bridge Fishing Association

A Croaker, Bluefish, Flounder,  
Spanish Mackerel, Black Sea Bass, Sheepshead,  
Spot, Spadefish, Triggerfish  
fishing challenge among angler clubs.

**Date:** Saturday June 24, 2023

**Location:** Willoughby Harbor Marina

**Measure In:** Starts at 12:30pm ends at 1:30pm

Entry Fee: \$10.00 per Angler. (Includes Fishing,  
Picnic, and Charitable Donation)

Picnic Only \$5.00

**Rules:**

1. Clubs are limited to 20 angler entries. No restriction on number of boats or anglers on a boat. All anglers must be members of your club.
2. Boats depart from any Virginia Port - No fishing boundaries.
3. Measurement is length only. Girth measurement determines a tie.
4. Five Points awarded for longest fish, Four Points for second longest, etc. Up to five fish entries for each species. The Club with the most points wins!



# Norfolk Anglers Club

[www.norfolkanglersclub.com](http://www.norfolkanglersclub.com)

## Fishing Tips...

### Wreck Fishing with Captain Brandon Cook, Reel Fish'n Charters, LLC.

When it comes to discussing offshore wreck fishing the first discussion isn't about bait, locations, or setups, it's about safety. Captain Cook put lots of emphasis on safety and having the right mindset to be equipped and prepared to deal with issues if they present away from shore. In addition to having the required safety equipment, he recommends wearing an inflatable Personal Flotation Device or PFD anytime you're on the water. He explained you never know when something may happen and you find yourself in the water and wearing your PFD may make the difference. He also recommends not cutting costs when it comes to signaling devices. While the flares you find locally at a sporting goods department meet US Coast Guard requirements, the SOLAS or Safety Of Life At Sea rated signaling devices are simply the best. They are rated and tested to a much high safety standard for illumination, altitude and pyrotechnic safety than others. In recent years the availability of satellite communication equipment has really grown. Whether it's for direct voice communication or texting having that option to summon assistance or let the family know you'll be later than your Float Plan is a real relief. He added, VHF radios while good for reaching out to other vessels in an emergency are limited to line of sight from antenna to antenna. Lastly, he added every boater should be prepared for things to not go right, have the safety equipment onboard, and not be hesitant to contact other vessels or *USCG Sector Virginia* on VHF Channel 16 for help.



[www.reelfishncharters.com](http://www.reelfishncharters.com)

[f Reel Fish'n Charters, LLC.](#)



Before a trip begins there's always work to prepare with rigs, rod/reels, and research. Selecting the right time and fishing location is often based on recent fishing reports and weather conditions. Brandon added that finding new areas to check out can be very rewarding. He prefers to use the NOAA Bathymetric Data Viewer, an online resource from the National Oceanic and Atmospheric Administration (NOAA). There are a number of navigation apps and chart plotter card inserts that can provide detailed side scan imagery and some can be quite pricy. The NOAA website is free however, navigating the different options to find the relief and overlays that you desire can be challenging.



### Three Dimensional (3D) Bathymetric Data:

"Three What!? You say? 3D is the good stuff and once you dive into this resource you'll spend long days and night drilling down on every spec you see on the charts. The National Oceanic and Atmospheric Administration (NOAA) merged three of their data centers into a single source for climate, geophysical, and oceanographic data under the National Centers for Environmental Information (NCEI). What Anglers get is a single source to search through NOAA's Bathymetric Maps (topography maps of the ocean floor) showing contours obstructions and wrecks. Many of the areas off coastal Virginia have been subject to multi-beam sonar imaging. Generally, areas from the shoreline to the Triangle Artificial Reef area have been side-scanned and imagery is available. (Images courtesy of NOAA/NEDIS)



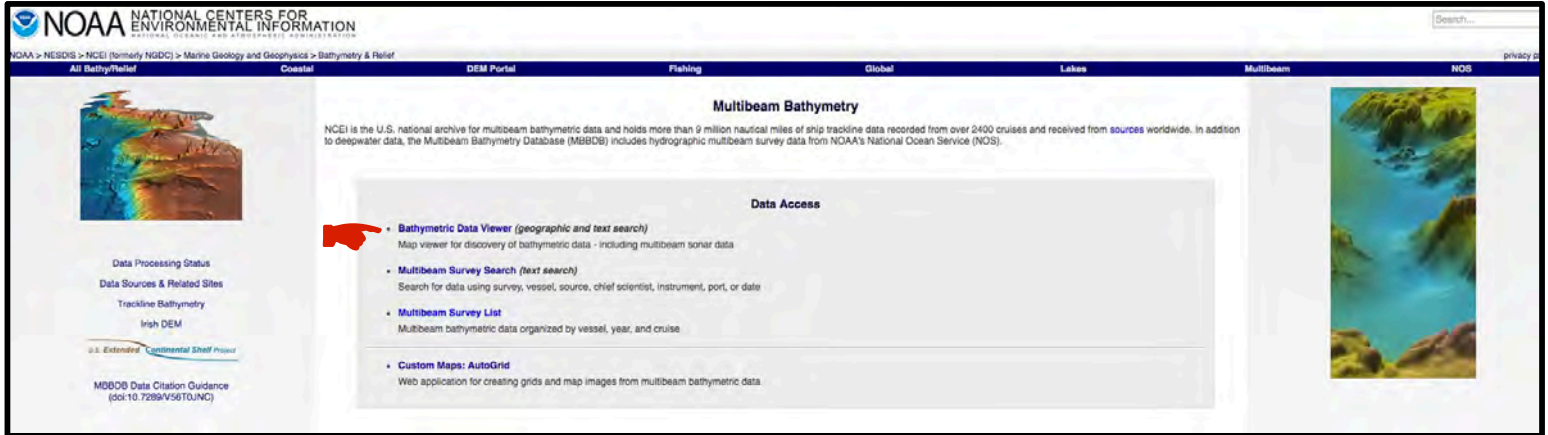
# Norfolk Anglers Club

[www.norfolkanglersclub.com](http://www.norfolkanglersclub.com)

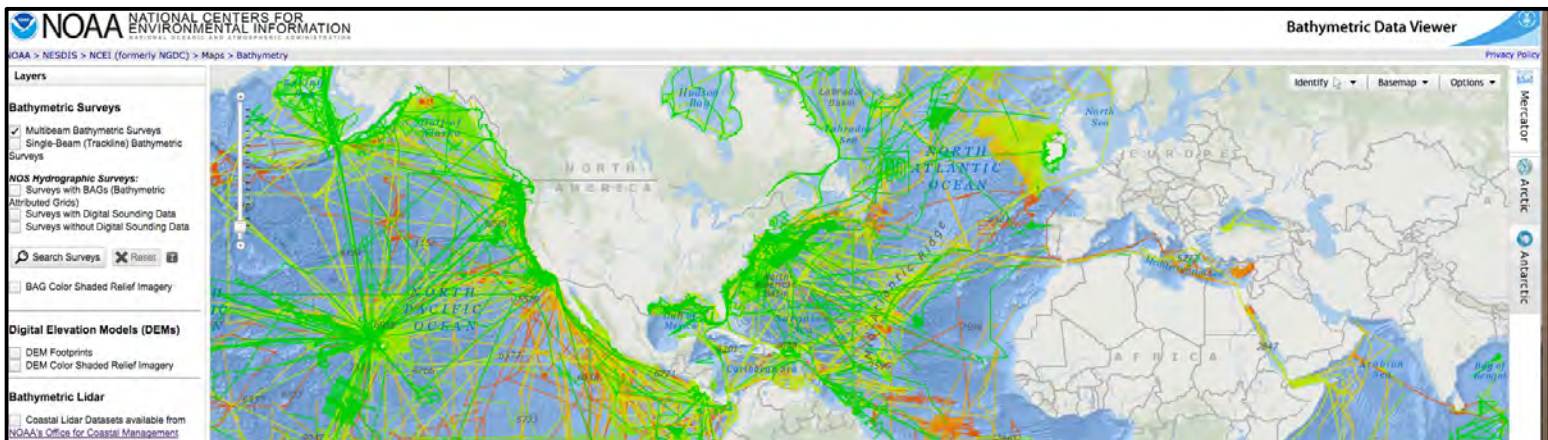
# Fishing Tips...

## How to get started:

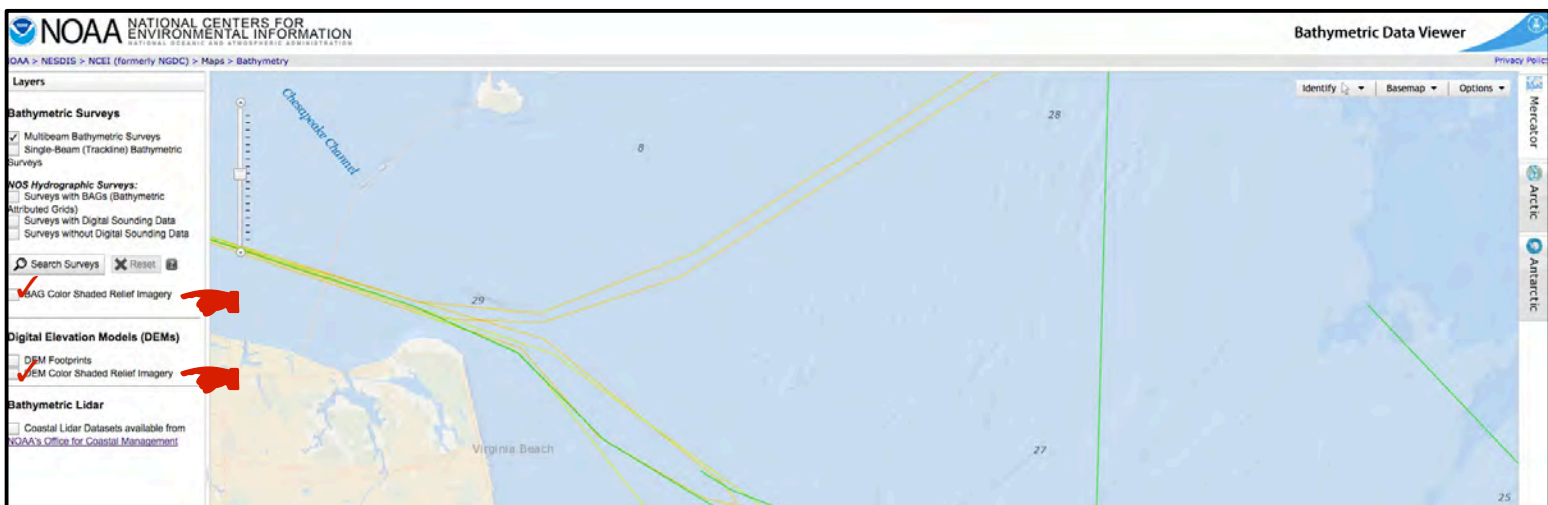
Start by searching for *NOAA 3D Bathymetry* or *NOAA 3D Bathymetry ART GIS* and you'll end up at the NOAA Multibeam Bathymetry page ([www.ngdc.noaa.gov/mgg/bathymetry/multibeam](http://www.ngdc.noaa.gov/mgg/bathymetry/multibeam)) and select "Bathymetric Data Viewer"



The webpage is going to populate a world chart with all the color coded areas that have Multibeam Bathymetric Surveys. Center and enlarge the chart to the area you want to search before selecting a few other options.



Once you have the area enlarged and focused on where you want to search the next step is to select the Digital Elevation Models (DEMS) and chart overlays.



On the left side of the page, check the block labeled **DEM Color Shaded Relief Imagery** and the block titled **BAG Color Shaded Relief Imagery**. The upper block titled **Multibeam Bathymetric Surveys** should already be checked. The uppermost block, **Multibeam Bathymetric Surveys**, should already be checked.



# Norfolk Anglers Club

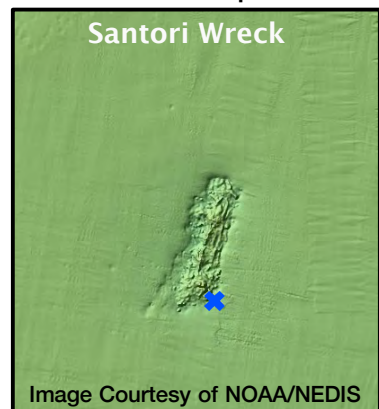
[www.norfolkanglersclub.com](http://www.norfolkanglersclub.com)

## Fishing Tips...

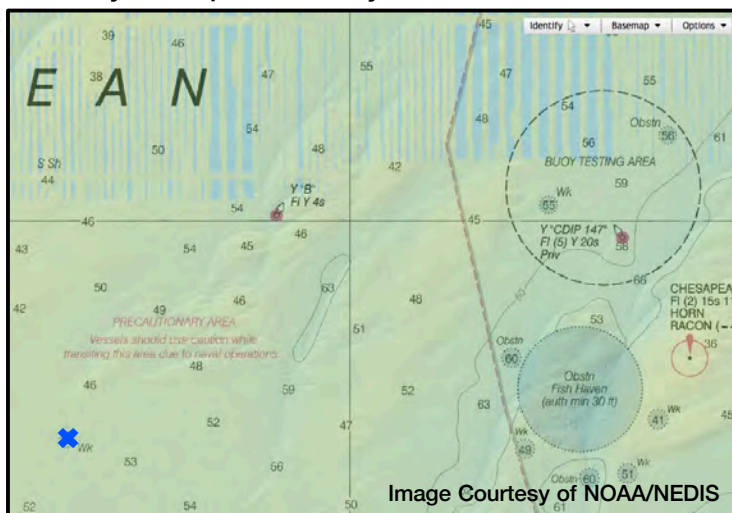
In the upper right corner there are three drop-down menu boxes titled Identify, Basemap, and Options. Under the Options tabs select the "NOAA Raster Navigational Charts (RNC)" box. This will overlay a nautical chart and provide a method to navigate around the areas as you search for interesting marks to investigate.



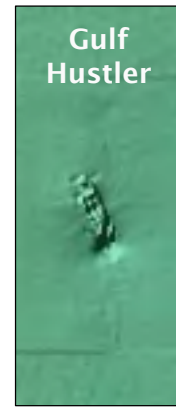
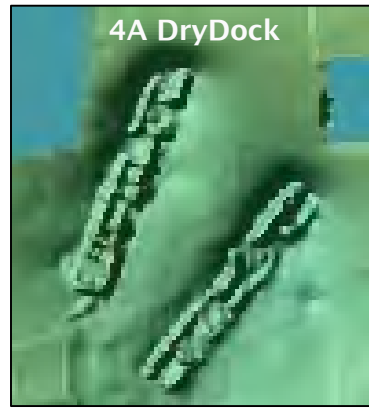
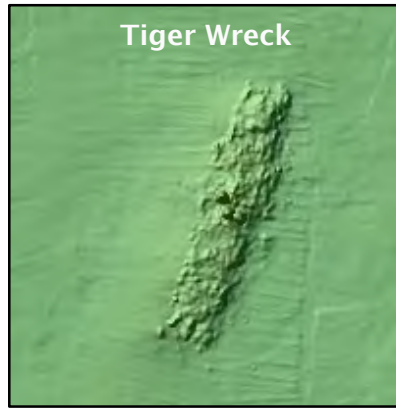
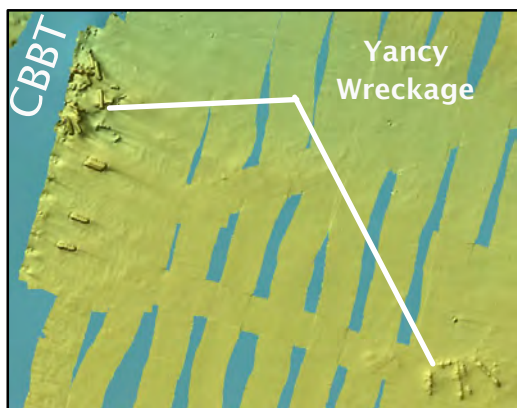
A couple of other useful tools are the zoom buttons in the top left corner and the Identify button. As you slowly increase the zoom feature the multibeam side scan imagery will emerge and at one point the Navigational Chart will disappear. This is where the Identify pointer will be handy to use. If you drop the Identify menu down click on the first item labeled Point (Single Click). After clicking on Point (Single-Click) scroll over to where you want to drop an "x" and click on the spot. A blue "x" will emerge and can help



to re-locate what you're looking at while you zoom in to the imagery detail you desire. To clear the "x" just click on the top right corner of the Identified Features pop-up window. You can also draw rectangle or polygon areas which will be shaded in yellow using the other Identify options.



When you've found something you want to transfer the position to your boat's GPS, use the cursor and observe the lower left box in the screen. You'll have the Decimal-Degrees position wherever the cursor is pointing. Please note it's presented in Longitude, Latitude format instead of Latitude, Longitude. Then use the Boulder Coordinate Converter program to get the corresponding navigation format you desire. Images courtesy of NOAA/NEDIS.





# Norfolk Anglers Club

[www.norfolkanglersclub.com](http://www.norfolkanglersclub.com)

## Fishing Tips...

### Global Positioning System (GPS) & Coordinate Converting 101:

Many have difficulty switching from one coordinate system to another. There are a number of coordinate systems to navigate but for this discussion we'll focus on the primary three; Degree-Minutes-Seconds, Decimal-Minutes, and Decimal-Degrees. The Degrees-Minutes-Seconds (N36 54 08 , W75 43 17) is the traditional navigation format generally used before GPS. You'll often see it in Marine Casualty Reports and Naval logs when doing your research.

It's important to note that before GPS (pre 1990) the Long Range Navigation or LORAN system was in use and while it was an accurate navigation system, conversion from LORAN numbers to a GPS position is notoriously inaccurate.

Most GPS units use either Decimal-Degrees (36.902417 , -75.721483) or Decimal-Minutes (N36 54.145 , W75 43.289) format. Navigating between these differing formats isn't as hard as you think. Search for "[Boulter.com and GPS](#)" and you'll find their *GPS Coordinate Converter, Maps, and Info* (pictured right). Type in the position you have and select the *Convert & Map* button and the position will convert to all of the positional formats for you. Remember to be accurate in entering the position information. Omitting a space, decimal, or negative sign (Longitude) can result in the program not converting or misrepresenting the position. The negative (-) sign in the Longitude (-75 43.289) must be there to place you in the Western Hemisphere. So, what's the position? It's the Brass Spike wreck east of the Tower Artificial Reef area.



Image Courtesy of NOAA/NEDIS

### GPS Coordinate Converter, Maps and Info

Enter coordinates

36 54.145, -75 43.289

(like 37 23.516 -122 02.625, but it's flexible)

Convert and Map

Decimal Degrees (WGS84)

Latitude

36.902417

Longitude

-75.721483

Degrees, Minutes & Seconds

Latitude

N36 54 08

Longitude

W75 43 17

GPS

Latitude

N 36 54.145

Longitude

W 75 43.289

UTM

18N

X

435723

Y

4084290

### Equipping and Rigging for Wreck Fishing

Brandon shared rod & reel setups will vary with personal preference. He added, while high quality (higher priced) combinations work very well, lesser quality rod/reel combinations work too. You don't need to break the bank to get into wreck fishing. He shared one thing you should focus on is the size of the reel and type of rod. Heavy rod/reel combinations won't work for wreck fishing all day. Gear needs to be light enough to not wear you out and strong enough to wrestle a large tautog away from structure. You'll need around 200-300 yards of line capacity to fish most wreck off our coast.

Artificial baits and attractants like the Gulp line of artificial bait work great but add significant cost. Brandon prefers using some of the off brand artificials and they deliver great results. For flounder however, he'll stick with the Berkley® Gulp! artificial tails. He explained that for most species the off brands work fine and he'll occasionally combine pieces of a chewed up Gulp to the other rubber tails with good success. He cautioned that you can't store rubber lures of different manufacturers together otherwise they dissolve into a useless mess. Favorite colors for black sea bass include chartreuse, orange, or red.

For tautog fishing it's all about baiting with crabs. Blue crabs and jonah crabs (white leggers) are hands down the best bait for taugs. Blue crabs are most often halved or quartered while jonah crabs are usually used whole. Quartered blue crab or pieces are also great for sea bass.



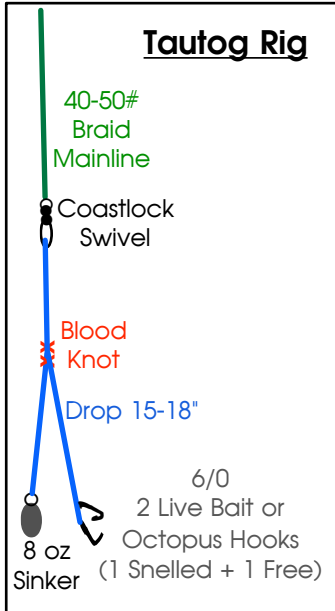
# Norfolk Anglers Club

[www.norfolkanglersclub.com](http://www.norfolkanglersclub.com)

## Fishing Tips...

For taugs Brandon uses two Live Bait or Octopus hooks on his rig sized 5/0 or larger. He selects only heavy duty hooks and cautions that lighter weight hooks will often straighten out on larger fish. He ties his monofilament leader with a Blood Knot trimming the end from the sinker line short and leaving the other end longer. This longer end now becomes the drop to the hooks. He threads a free sliding live bait hook onto the line before snelling another hook on the end. When complete both drops from the blood knot are nearly equal length with the hook drop slightly longer.

### Tautog Rig



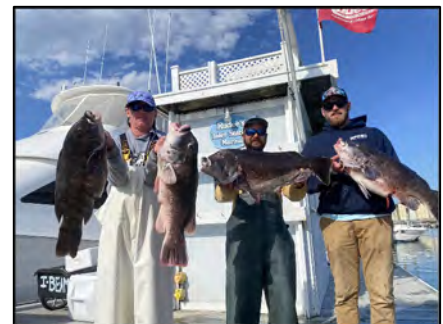
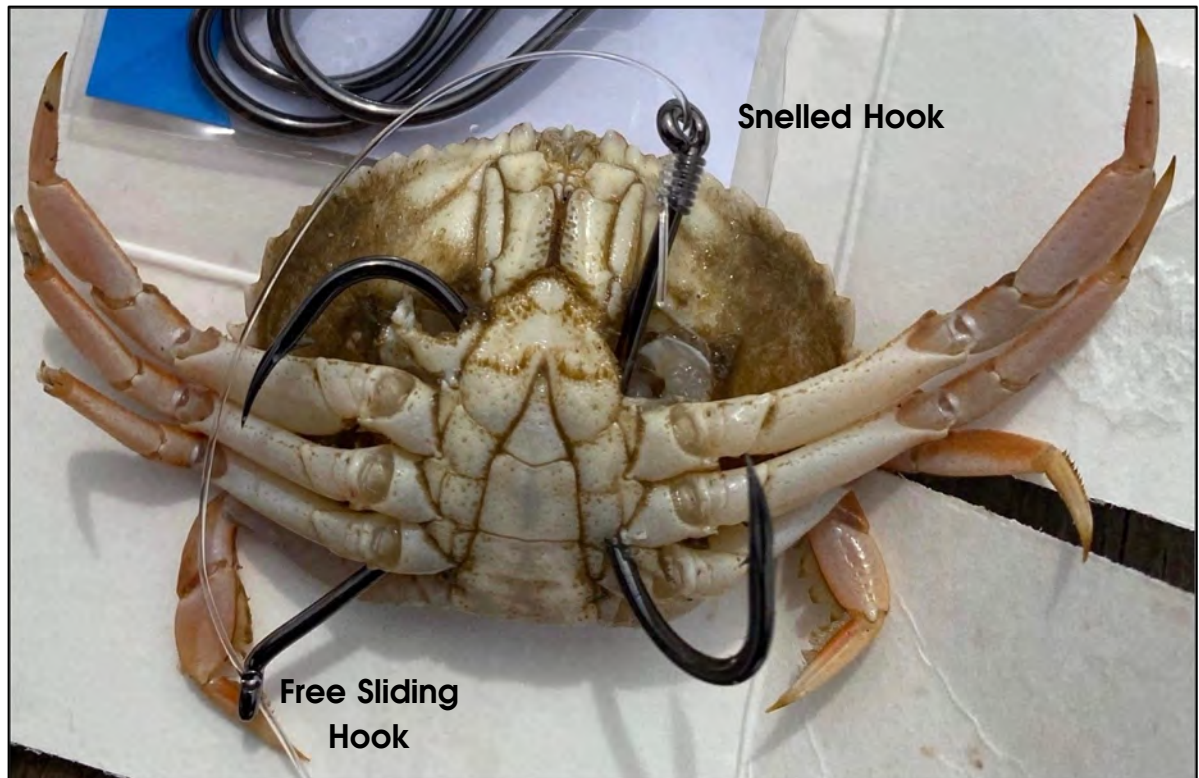
Preparing the jonah crab bait requires removing the claws. Then inserting one of the hooks into a leg socket and exiting out the opposite end on the same side. The second free sliding hook is similarly rigged but on the other side of the crab and in the opposite direction. When complete the hooks will be exposed under the crab in opposite directions. Taugs have large pronounced front teeth to crush the shell of mussels, clams, and crabs (photo lower left).



**Captain Brandon Cook - Reel Fish'n Charters, LLC.**

**757-617-3878**

[www.reelfishncharters.com](http://www.reelfishncharters.com)







## Summer Kids Surf Fishing Event Volunteers Needed

During the summer the US Fish & Wildlife Service hosts a kid's surf fishing event at the Back Bay National Wildlife Refuge.

USF&W provides all the fishing equipment and bait necessary. We're looking for volunteers to help the kids with baiting rigs, casting, and handling the fish. Sign up at the next Club meeting.

8:30am to noon

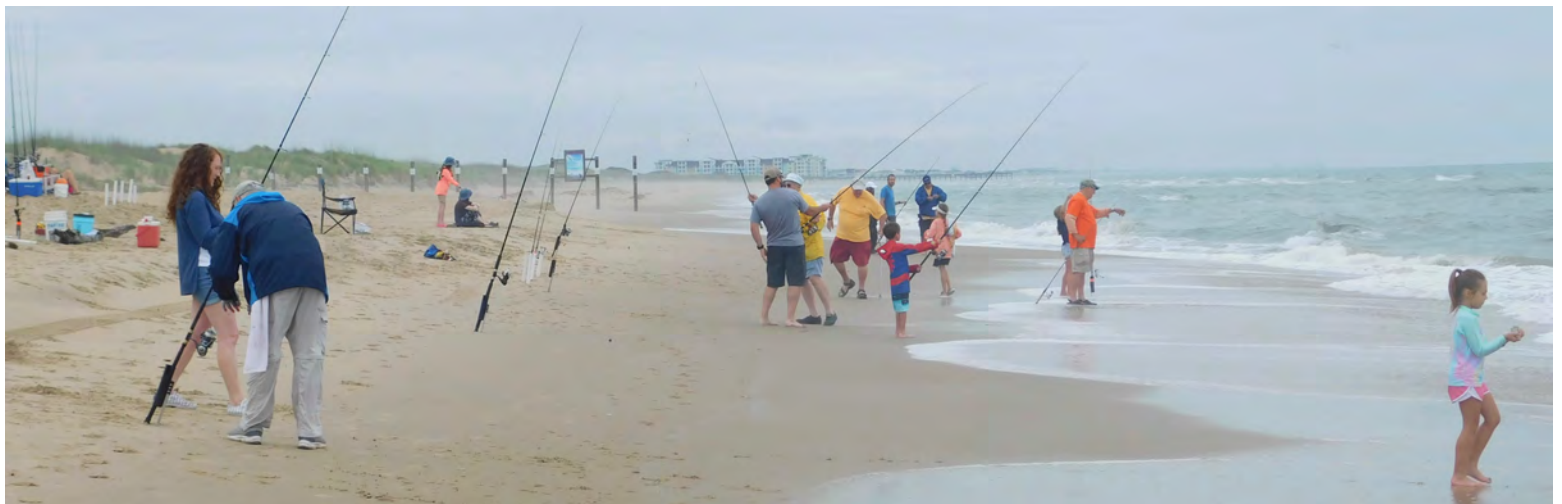
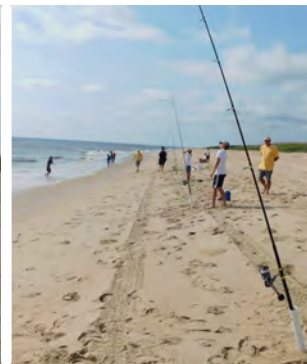
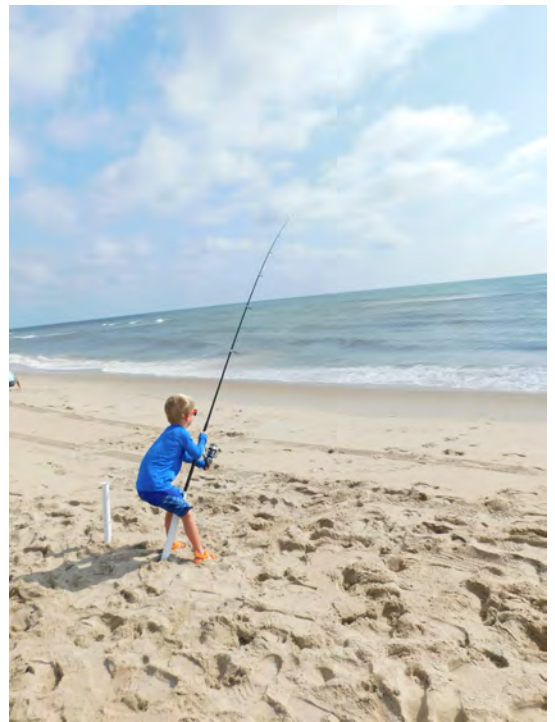
Thursday, June 22nd

Thursday, July 6th

Thursday, July 20th

Thursday, August 3rd

Thursday, August 17th





# Awards Banquet

Saturday June 3  
Norfolk Yacht & Country Club



The Annual Awards Banquet is an opportunity to gather to recognize our anglers for their accomplishments. This is a private event for our membership and their invited guests that includes dinner, awards presentations, and a raffle. For our members, please register for the Banquet at the May 15th meeting (Cash/Check) or purchase your banquet tickets (\$30) through the Club website (PayPal).



We've received a number of nice raffle items for this year's banquet including a Cobra handheld VHF Radio, Trailer Light kits, Mystery Fishing Tackle Boxes, gift cards, rod/reel combos, fishing tackle, gift baskets, and much more. The more the BETTER! So, if you'd like to contribute a \$25 gift card or fishing equipment please bring it to the May meeting and we'll gladly add it to the raffle. Your donations help support our banquet and our fishing programs for children.



**ACE**  
Hardware



**Academy**  
SPORTS+OUTDOORS



# Fishing Reports...



26 APR: My neighbor Don Gogan and I went up to Ed Allen's, fished Chickahominy Lake, and caught a 3lb, 10oz bass and three bowfins, and some white perch. *Bass fishing has been on fire in our local lakes and ponds!*

- Mike Rheinhardt







2 April: Andrew Anderson caught his first Drum of the season on a Sunday using fake shrimp in the Hague in Norfolk, Virginia. He is so happy that the fish are biting again! - Mary Ellen Anderson



The area of the Hague was originally known as Smith's Creek, Paradise Creek and Puddin' (Puttin Creek)." The residential part of The Hague in Norfolk has had a very interesting history since its creation by two Dutch men at the end of the 19th century. The men, J.P. Andre Mottu and Adolph Boissevain, worked for the Norfolk Company, a real estate firm connected with the Norfolk and Western railroad. The firm's goal was to build up Norfolk from an industrial city to contain upper-class suburbs as well.

5 April: I wanted to take the Shamrock, Tautog fishing, but didn't like the wind forecast for the afternoon, so we took the skiff to the Nottoway River for some easy action with the Shad.

As usual, they did not disappoint, and we caught way more than I could keep track of. Quite a few doubles and White Perch thrown in. Ran into the Virginia Department of Wildlife Resources (DWR) shocking fish for a survey of some type. They are nice guys and full of information about the Nottoway River. Small spoons with shad darts 18" up the leader; color didn't matter.

- Mary and Henry Troutner



← **DO YOU KNOW THE HISTORY OF THE THE AREA OF THE HAGUE?**

**Virginia Printing & Signs**  
Division of JAMMAC Corporation



**Brian A. Getz**

Tel: (757) 855-5474 • Fax: (757) 855-5748

Email: [virginiaprinting@aol.com](mailto:virginiaprinting@aol.com)

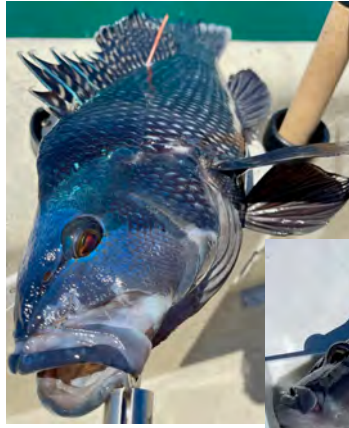
6610 E. Virginia Beach Boulevard • Norfolk, Virginia 23502



13 APR: I wanted to try fishing for Tautog on the Tiger Wreck. With the warming water temperatures, I also wanted to see if any Red or Black Drums were holding onto the wreck. No Drum on this trip, but a couple of small Tautogs and Black Sea Bass up to 16 inches were caught and released using quartered Blue Crabs.



Released Tautog



A bump head Sea Bass, tagged and set to release.

15 APR: I tried the first and second islands of the Chesapeake Bay Bridge-Tunnel (CBBT). I fished the end of the outgoing tide through the beginning of the incoming, only to find a small Black Sea Bass, an Oyster Toad, and my first Flounder of the year at 13 inches was using a three-inch Gulp Swimming Mullet on this trip.

First Flounder of the year, to be released.



A male Black Sea Bass is to be released

20 APR: I fished the Lafayette River in Norfolk during the early afternoon using Z-man weedless swim baits. I fished oyster beds during the falling tide and experienced slow fishing overall. The trip was saved by finding one 28-inch Puppy Drum.

Puppy Drum

- Alex Perez



11 April: NAC members John Curry, George Curry, and Henry Troutner (The Chuckatuck Crew) spent the morning repairing and maintaining the Private Aids to Navigation, marking the channel from Brewers Creek from the Chuckatuck River. This channel provides safe access through a very narrow and shallow area to the Chuckatuck and James Rivers for several hundred people from the area. - Henry Troutner





19 APR: I got this 30-inch Puppy Drum back in the Western Branch of Lynnhaven River.

- Andy Reid



## Help Starts Here.

Membership has its benefits.

**Benefits like priority service, free fuel delivery, jump starts, and dock-to-dock towing all add up to big savings.** Last year, Sea Tow® members saved over \$20 million in services.

*Join today and SAVE \$20.*

**USE PROMO CODE: FCD.**

FOR ANGLER CLUB MEMBERS ONLY. OFFER EXPIRES JUNE 1, 2023.

**Sea Tow Hampton Roads**  
757-496-1999 \ seatow.com

**SEA TOW.**







24 APR: I went for a quick run to the mouth of Brewers Creek to check out the channel markers that George, Henry, and I worked on a couple of weeks ago. I Took my rod and some mud minnows and ended up with a 19-inch puppy drum. I fished on a jig dragging across an oyster bed. The tide had just changed to ebb.

- John Curry

13 April: Friends visiting from Pennsylvania left for home at about 9:30 AM. With such a beautiful day forecast, Mary and I took the Shamrock out for a few hours of tautog fishing. Launching at Dandy Point (Wallace's), we headed to the Back River Reef.

We were slightly off-structure when I anchored, but we tried it with no bites. When we went to move, my wreck anchor was hooked solid. I tried everything, but it wouldn't come up. Since we only had one, I didn't want to break/cut it because we'd have to end our fishing. We continued fishing with the current moving us on and off structure—result: 3 tautogs, all short females with eggs released, and a Toadfish.

Two of the tautog Mary caught as a doubleheader. All caught on bottom rigs with fiddlers. I tried a tautog jig, but as I've previously experienced, all I do is feed the tautog, can't seem to hook one. We ended up having to cut the anchor off.

20 APR: NAC member Marty Schriebl invited Mary and me to fish on his new to him 19-foot Tidewater Center Console. This was also Mary and my first trip as VMRC fish taggers. We launched at Dandy Point and headed out for tautog with a bucket full of fiddlers and shedders.

The first stop was Back River Reef, where I immediately caught a keeper tautog. We fished various pieces of the reef, catching one short tautog, our first tagged fish, and several large toadfish.

We then headed to the 3rd Island and caught another short tautog and a couple of toads. We were moving on to the 1st Island; Mary landed a very nice 20-inch tautog—a beautiful day on the water on a great running boat.

- Mary and Henry Troutner





19 APR: The Spring is not known for many fish being caught in Pretty Lake/Little Creek, but that doesn't mean we haven't tried. Louis Glaser and I have gone out there at least four times and only caught fish one day. But it was a good day catching fish!

We started fishing in the incoming tide out at the jetties, but found nothing. The eastern jetty was heavily shoaled up and shallower than usual, possibly because of the dredging of the creek by the Navy. So, we headed into Pretty Lake and tried several spots until we got to the back of the Lake when Louis nailed an 18-inch speckled trout! Our first for the new year here.

We caught on an Electric Chicken 27MR, MirrOlure. So, I switched off rubber jigs to the same lure and, within minutes, had a 17-inch puppy drum on.

From that point, we had five puppies caught and one trout. One of those puppies was 21 inches long, which you can see in the picture on the right.

They are the best fighting fish on light tackle. They hit hard and always make a solid run for it after hitting your lure. But, after about an hour of this great fishing, the school was gone.

*So far, that was the best catching of the month.*

- Dr. James W. Ike Eisenhower



29 APR: John Curry invited Mary and me to try the Red and Black Drum on the James River.

We expected the Black Drum to show up any time now. We had more wind and chop than expected, making it hard to fish the pillions.

We only fished for an hour due to the wind/waves, but I did manage to catch and release a 29-inch Striper.

Bait was minnows and shedders.

- Mary and Henry Troutner





# Virginia Game Fish Tagging Program

Here's the class of 2023! Kudos to our AWESOME new group of volunteers who joined the [Virginia Game Fish Tagging Program](#) at our annual training workshop last night! An extra special thanks to our expert volunteer workshop instructors: Wes Blow, Tom Embry, Alex Perez, Ed Shepherd and Carl Stover!



28 APR: Thank you to Virginia Game Fish Tagging Program volunteer Alex Perez for doing a great job as SD tagging instructor at our workshop last week!







# Celebrating 59 Years!



1964

After 42 months of construction the Chesapeake Bay Bridge Tunnel opened with 17.6 miles (shore to shore) of two-lane bridge spans and tunnels across the Chesapeake Bay.

Photo Courtesy of [www.cbbt.com](http://www.cbbt.com)

1999

The Chesapeake Bay Bridge Tunnel Commission completed Phase I of the Parallel Crossing Project, expanding from two-lanes to four-lane roadway on parallel bridge structures.



Photo Courtesy of [www.cbbt.com](http://www.cbbt.com)

2017

Construction begins on Phase II of the Parallel Crossing Project to construct a parallel tunnel at the Thimble Shoal Channel.

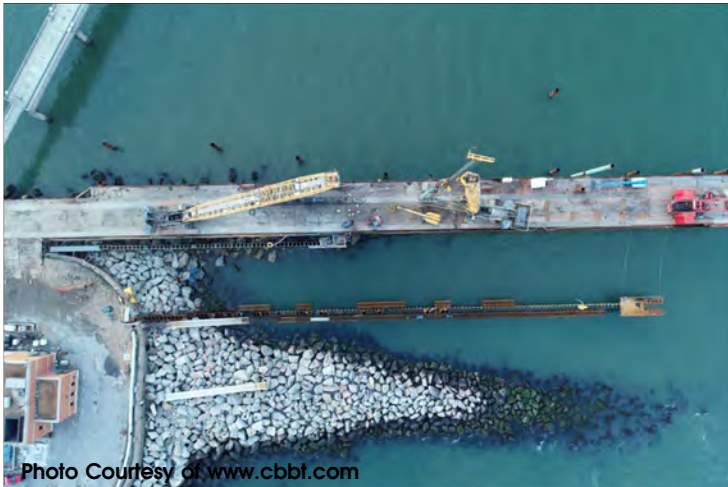


Photo Courtesy of [www.cbbt.com](http://www.cbbt.com)

Unlike the original tunnel construction and placement of preformed tunnel sections, the Phase II Project uses a Tunnel Boring Machine (TBM). Pictured right, "Chessie", as it is named is 43.5 ft diameter TBM that is 308 ft in length and weighing more than 6 million pounds. Boring at a rate of 50-60 feet per day it's estimated to take an entire year to complete the tunnel boring between the CBBT first and second island.



Photo Courtesy of [www.cbbt.com](http://www.cbbt.com)



# Angler Interests

## Black Sea Bass Season Opens May 15



At their April Marine Resources Commission meeting VMRC voted to open the regular black sea bass season on May 15th and apply a mid-season closure to account for the February season harvest and an Atlantic States Marine Fisheries Commission (ASMFC) mandated 10% reduction.

The February sea bass season is an approved ASMFC season which requires any harvest during that special season to be applied to the state's annual recreational harvest allocation. In 2022 Virginia didn't have a special February season due to late action by ASMFC however, there was a 10% reduction applied and the regular season last year closed early on December 10 with no mid-season closure. February 2021 was the last time Virginia had a special season with 650 anglers participating with 146 trips reported and 15,000 pounds of sea bass landed. In comparison, the 2023 February season had 1,400 anglers participating with 257 trips reported and 38,000 pounds of fish landed. Combining the 10% coastwide reduction from ASMFC and the February harvest necessitates a 33 days mid-season closure and the following season for this year.

### 2023 Black Sea Bass Season

May 15-July 6 and August 9-December 31

15 fish per person per day

13.0 inch minimum size

## Blueline Tilefish Season open May 1st



May 1st marks the opening of blueline tilefish season in federal waters. There's no minimum size limit of blueline tilefish however the possession limits varies between vessel types. Three (3) fish per person on a recreational vessel; five (5) fish per person on a USCG uninspected for-hire vessel; seven (7) fish per person on a USCG inspected for hire vessel. Remember that a NOAA Permit is

vessel; seven (7) fish per person on a USCG inspected for hire vessel. Remember that a NOAA Permit is required to target tilefish and requires trip reporting. Reporting is easily done using the eFin Logbook app. Golden tilefish are open all year with a possession limit of 8 per person per day. They too fall under the NOAA Tilefish permit and require trip reporting.



eFin Logbook

### STEP 1: GET A PRIVATE RECREATIONAL TILEFISH PERMIT

Before you go fishing for tilefish, you will need to apply for a free private recreational tilefish permit. This is a vessel permit, not an individual permit.

Start by registering for an account on GARFO Fish Online at the link below. Once you have created your account and signed in, click "Initial Private Recreational Tilefish Permit" and enter the required information.

[Go to GARFO Fish Online](#)

The screenshot shows the NOAA Fisheries Fish Online login interface. It includes the NOAA Fisheries logo, a welcome message, and instructions on how to log in. There are input fields for Username and Password, and a Log In button. A link to the privacy policy is also visible.



## CVOW-C MARINER UPDATE 2023 #3: 21-APR-2023



### Unexploded Ordnance (UXO) Survey and UXO Identification Work

UXO Survey activities are expected to finish in early-May 2023 with the vessels operating on a 24/7 basis to complete the remaining work in the area identified below. The R/V Minerva Uno and R/V Shearwater will then be demobilized from the site.

Around 25-April, the UXO Identification work will begin with mobilization of the M/V Subsea Responder I, followed shortly by the M/V Subsea Responder II. These vessels will utilize Remotely Operated Vehicles (ROVs) to review objects identified by survey activities to determine if they are UXO. This operation will start in the nearshore cable corridor (Area A) and continue offshore through Area B and then into the Lease Area (Area C). These operations are expected to continue into the Fall of this year.

These vessels will not be towing any survey equipment and should not pose a hazard to any fixed gear commercial fishing operations. However, mariners transiting or fishing in the survey area are requested to give a wide berth to survey vessels which may be limited in their ability to maneuver. Mariners should operate in a manner that will not endanger themselves, the survey vessel or its equipment – a 0.5 NM clearance is requested.

We remain committed to maintaining communications with fishing communities and other mariners in the area via these periodic updates, informational speaking engagements and dock visits. The information is also posted on the [CVOW Website](#).

### CVOW and Other Offshore Wind Projects Protecting Whales

We urge all mariners to follow the lead of the offshore wind industry and take reasonable, responsible actions to help protect large whales and marine mammals along the coast.

For additional information, please follow the below links and/or contact our Marine Affairs team.

- [North Atlantic Right Whale Unusual Mortality Events Factsheet](#)
- [North Atlantic Right Whale Updates | NOAA Fisheries](#)
- [Compliance Guide for Right Whale Ship Strike Reduction Rule | NOAA Fisheries](#)
- [Frequent Questions—Offshore Wind and Whales | NOAA Fisheries](#)
- [Offshore Wind Activities and Marine Mammal Protection](#)

### Existing Offshore Turbines

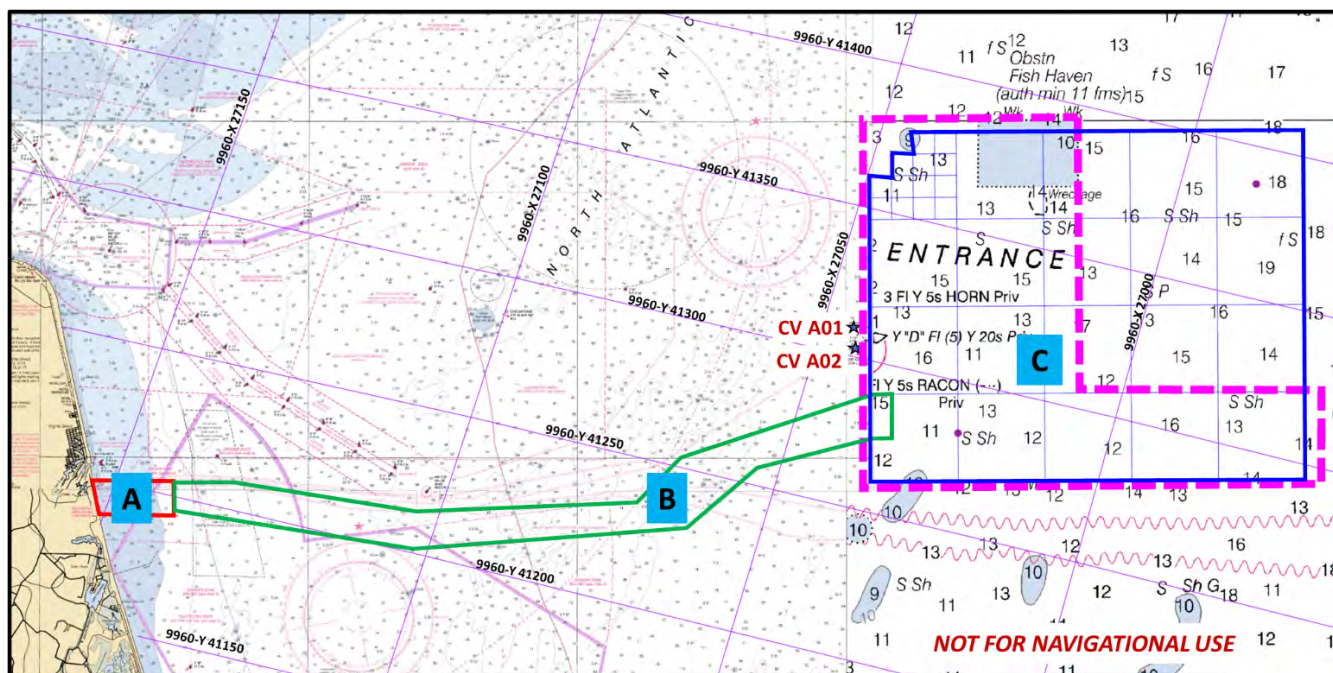
The two (2) CVOW Pilot (CVOW-P) turbines have been operational since October 2020; the GPS positions of the turbines are given below. Fishermen are allowed to fish close to the turbines but coming into contact with them is prohibited. Mariners are also advised to be mindful of maintenance vessels that may need to access the turbines. We request that you make way for them so that they can safely access their work site.

Item	Latitude (DD MM.mmm)	Longitude (DD MM.mmm)
Pilot Turbine CV-A01	36° 53.778' N	75° 29.498' W
Pilot Turbine CV-A02	36° 53.210' N	75° 29.495' W



# CVOW-C MARINER UPDATE 2023 #3: 21-APR-2023

## Chart reflects planned UXO Survey Areas (A, B & C)



**Vessels are requested to avoid anchoring in the identified survey area and fishing vessels deploying fixed fishing gear (e.g., pots, traps, gillnets, etc.) are requested to coordinate activities with the Fisheries Liaison to avoid damage to fishing gear and/or the survey equipment.**

### **Minerva Uno:** 155' LOA; 30' Beam

- Call Sign: IZVM
- Flag: Marshall Is.
- MMSI: 247080700
- IMO: 9262077



### **Shearwater:** 110' LOA; 39' Beam

- Call Sign: WDF5838
- Flag: USA
- MMSI: 368528000
- IMO: 8993966



### **Subsea Responder I:** 217' LOA; 54' Beam

- Call Sign: V7A5816
- Flag: Marshall Is.
- MMSI: 538010258
- IMO: 9201645



### **Subsea Responder II:** 238' LOA; 54' Beam

- Call Sign: V7FV9
- Flag: Marshall Is.
- MMSI: 538006153
- IMO: 9225495



Mariners are encouraged to contact Dominion Energy's Fisheries Liaisons with any specific questions about CVOW project activities in relation to fisheries. Please consult the [USCG 5th District Local Notice to Mariners](#) for additional information on offshore activity and, as always, please adhere to the USCG Rules of the Road for mariners: <https://www.dco.uscg.mil/NavRules/>

## Contact Us

<b>Ron Larsen</b>	Fisheries Liaison	<a href="mailto:ronlarsen@searisksolutions.com">ronlarsen@searisksolutions.com</a>	570.242.5023
<b>Michael Lewis</b>	Marine Affairs	<a href="mailto:michael.b.lewis@dominionenergy.com">michael.b.lewis@dominionenergy.com</a>	

**Additional project information is available on the Coastal Virginia Offshore Wind project webpage ([www.coastalvawind.com](http://www.coastalvawind.com))**





# Virginia Recreational Saltwater Fishing Regulations

*Last Revised  
April 2023*



## **Atlantic Croaker**

- Minimum Size Limit: No size limit
- Recreational Bag Limit: 50 per person; additional 50 live bait per customer capacity on for-hire or charter vessels



## **Spot**

- Minimum Size Limit: No size limit
- Recreational Bag Limit: 50 per person; additional 50 live bait per customer capacity on for-hire or charter vessels



## **Kingfish**

- Minimum Size Limit: No size limit
- Recreational Bag Limit: No bag limit



## **Grey Trout (Weakfish)**

- Minimum Size Limit: 12 inches
- Recreational Bag Limit: 1 per person



## **Bluefish**

- Minimum Size Limit: No size limit
- Recreational Bag Limit: 3 per person from shore or a rented or private vessel
- 5 per person on for-hire or charter vessels



## **Spanish Mackerel**

- Minimum Size Limit: 14 inches
- Recreational Bag Limit: 15 per person



## **King Mackerel**

- Minimum Size Limit: 27 inches
- Recreational Bag Limit: 3 per person



## **Cobia**

- Minimum Size Limit: 40 inches
- Recreational Bag Limit: 1 per person or 2 per vessel, whichever is more restrictive. Only 1 fish per vessel may be greater than 50 inches total length.
- Season: June 15 - September 15
- Gaffing prohibited



## **Summer Flounder**

- Minimum Size Limit: 16 inches
- Recreational Bag Limit: 4 per person



## **Striped Bass**

Any person fishing striped bass recreationally shall use non-offset, corrodible, non-stainless steel circle hooks when fishing with bait.

### Chesapeake Bay Spring Season

- Size Limit: 20-28 inches
- Recreational Bag Limit: 1 fish per person
- Season: May 16 - June 15

### Chesapeake Bay Fall Season

- Size limit: 20-36 inches
- Recreational Bag Limit: 1 fish per person
- Season: October 4 - December 31

### Coastal Season

- Size Limit: 28-36 inches
- Recreational Bag Limit: 1 per person
- Season: January 1 - March 31, May 16 - December 31

***Select species provided for information purposes only. Not all regulated species are included. All regulations are subject to change. It is the angler's responsibility to know and abide by all current regulations and laws. Check for new regulations before you go fishing.***  
**[www.mrc.virginia.gov](http://www.mrc.virginia.gov)**



## **Spadefish**

- Minimum Size Limit: No size limit
- Recreational Bag Limit: 4 per person



## **Sheepshead**

- Minimum Size Limit: No size limit
- Recreational Bag Limit: 4 per person



## **Black Sea Bass**

- Minimum Size Limit: 13
- Recreational Bag Limit: 15
- Season: May 15 – July 6, August 9 – Dec. 31



## **Tautog**

- Minimum Size Limit: 16 inches
- Recreational Bag Limit: 4 per person
- Season: January 1-May 15, July 1- Dec. 31



## **Speckled Trout**

- Minimum Size Limit: 14 inches
- Recreational Bag Limit: 5 per person, only 1 greater than 24"



## **Red Drum**

- Minimum Size Limit: 18 inches
- Maximum Size Limit: 26 inches
- Recreational Bag Limit: 3 per person



## **Black Drum**

- Minimum Size Limit: 16 inches
- Recreational Bag Limit: 1 per person